

# KIT DI MONTAGGIO PER CAMBI ZF ECOSPLIT - ZF AS TRONIC

**CODICE KIT**  
KIT CODE

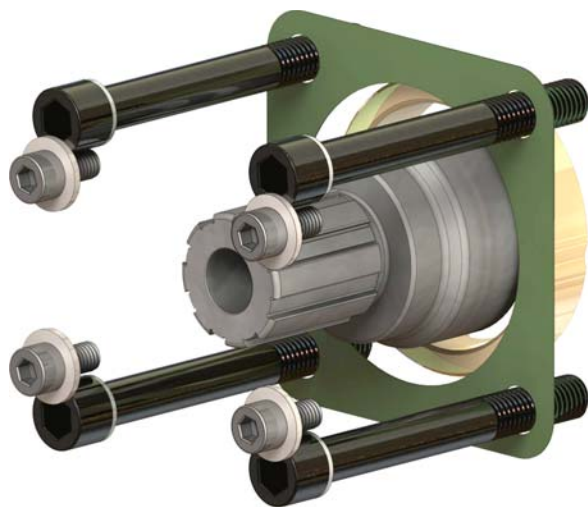
**97-35-10012**

**MOUNTING KIT FOR ZF ECOSPLIT -  
ZF ASTRONIC GEARBOX**

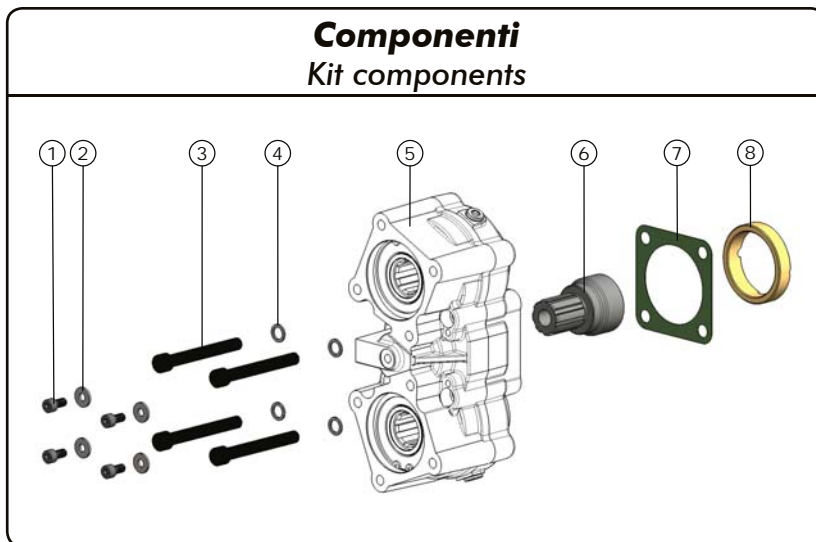
**CODICE PTO**  
PTO CODE

**12-35**

Codice foglio: 997-097-10012 Rev://



## Componenti Kit components



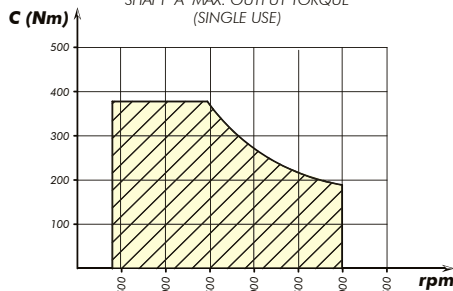
Codice fascicolo: 997-400-01235 Rev: AD

Pos.	Codice / Code	Qt.	Descrizione / Description	
1	502-003-00520	4	Vite TCE M 8x14	Screw TCE M 8x14
2	501-007-10080	4	Rondella piana	Flat washer
3	502-005-00715	4	Vite TCE M 12x100	Screw TCE M 12x100
4	501-025-00124	4	Rondella acciaio	Steel washer
5	012-035	1	PTO - non inclusa nel kit	PTO-not included in the kit
6	525-002-00532	1	Ingranaggio spostabile	Sliding gear
7	507-001-00086	1	Guarnizione finestra	Window gasket
8	534-002-00382	1	Anello 66x80	Ring 66x80
9				
10				
11				
12				
13				
14				
15				

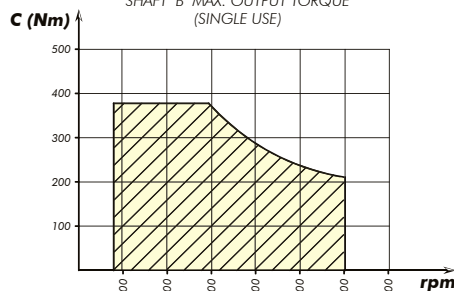
Data: Lunedì 1 marzo 2010

## Condizioni di funzionamento Working conditions

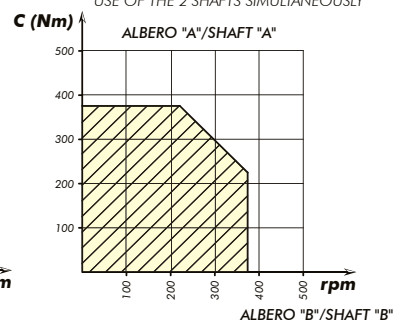
COPPIA MAX. PRELEVABILE ALBERO  
DI USCITA PTO "A"  
(Utilizzo NON contemp. con ALB. "B")  
SHAFT "A" MAX. OUTPUT TORQUE  
(SINGLE USE)



COPPIA MAX. PRELEVABILE ALBERO  
DI USCITA PTO "B"  
(Utilizzo NON contemp. con ALB. "A")  
SHAFT "B" MAX. OUTPUT TORQUE  
(SINGLE USE)



COPPIE PRELEVABILI PER IMPIEGHO  
SIMULTANEO DEI 2 UTILIZZI  
MAX. OUTPUT TORQUE FOR THE  
USE OF THE 2 SHAFTS SIMULTANEOUSLY



Cambio Gearbox	Albero Quill-shaft	Giri PTO in marcia PTO output speed	
		Lenta Low rpm	Veloce High rpm
16S-151 DD/16,41-1,00 - 16S-181 DD/16,41-1,00 16S-221 DD/16,41-1,00	93-6-17	1203	1422
16S-151 OD/13,80-0,84 - 16S-181 OD/13,80-0,84 16S-221 OD/13,80-0,84		1422	1704
16S-1620 DD/16,41-1,0 - 16S-1920 DD/16,41-1,0 16S-2220 DD/16,41-1,0 - 16S-2320 TD/16,41-1,0 16S-2330 TD/16,41-1,0		1204	1422
16S-1820 TO/13,80-0,84 - 16S-2220 TO/13,80-0,84 16S-2520 TO/13,80-0,84 - 16S-2720 TO/13,80-0,84 16S-2730 TO/13,80-0,84		1266	1704
12AS-1800/14,89-1,0 16AS-2200/15,89-1,0		1188	
12AS-1630 TD/15,86-1,0 - 12AS-1930 TD/15,86-1,0 12AS-2130 TD/15,86-1,0 - 12AS-2131 TD/15,86-1,0 12AS-2140 TD/15,86-1,0 - 12AS-2340 TD/15,86-1,0 12AS-2430 TD/15,86-1,0 - 12AS-2540 TD/15,86-1,0		1110	
12AS-1930 TO/12,33-0,78 - 12AS-2130 TO/12,33-0,78 12AS-2330 TO/12,33-0,78 - 12AS-2530 TO/12,33-0,78 12AS-2540 TO/12,29-0,78 - 12AS-2740 TO/12,29-0,78 12AS-2940 TO/12,29-0,78		1282	
16AS-2230 TD/17,03-1,0 - 16AS-2601 DD/17,03-1,0 16AS-2601 OD/14,12-0,83 - 16AS-2630 TO/14,12-0,83		2110	
		1188	
		1735	

Codice foglio: 997-097-10012 Rev: //

Codice fascicolo: 997-400-01235 Rev: AD

Data: Lunedì 1 marzo 2010

